



A River Runs Through Shawl

By Carly Stipe

This shawl was designed for our 2018 Knit the River cruise!



Instructions

This shawl is knit flat in one piece!

River Band:

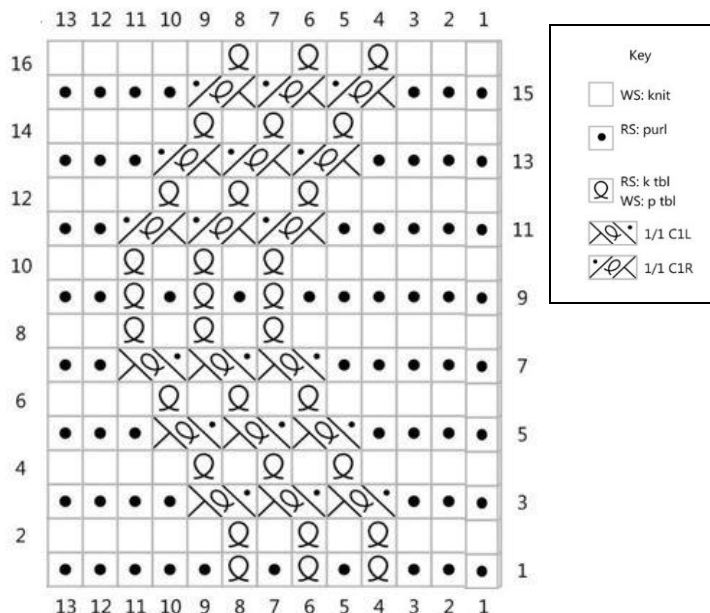
I Cord Cast On 33 stitches

Row 1 (RS): Sl3wyif, work chart, pm, (k1, p1) twice, pm, k2togtbl, knit to last 3 stitches, yo, k3

Row 2 (WS): Sl3wyif, kfb, k to marker, sm, (k1, p1) twice, sm, work chart, k3.

Repeat **Rows 1 & 2**, working appropriate row of chart as you go slipping markers as you come to them. Our shawl repeated the 16 row chart 13 total times.

Bind off loosley on a wrong side row with an I Cord bind off.



Materials

Yarn: 1 skein, Sweet Georgia Tough Love Sock (425yds/115g)

Color: DKA Exclusive Color River

Needles: US6 or 7 24" or 32" needle

Notions: Cable Needle

Tapestry needle, 2 stitch markers

Size 14" x 42" long

Gauge

20 stitches x 28 rows = 4" in garter

Abbreviations/Definitions

K=Knit

P = Purl

RS = Right side

WS = Wrong side

Sl3wyif = slip 3 stitches as if to purl with yarn in front

PM = Place Marker

K2togtbl = knit 2 stitches together through the back loop.

SM = Slip Marker

1/1C1L = Using CN, Cable 1 over 1 left...slip 1 to CN, hold in front, P1, K1tbl from CN.

1/1C1R = Using CN, Cable 1 over 1 right...slip 1 to CN, hold in back, K1tbl, P1 from CN

