



## A River Runs Through Hat

By Carroll Davis-Johnson

This uniquely constructed hat is the perfect topper for a cruise on the river!



### Instructions

This hat is made in two parts. Knit the cabled river band and garter edge flat then seam ends to create brim of the hat. Next, pick up stitches from top edge of brim and work in the round to complete top.

#### River band:

CO 20 stitches

**Row 1 (RS):** Knit 5, PM, work row 1 of chart

**Row 2 (WS):** Work row 2 of chart, SM, Knit 5

Continue working all 16 rows of chart maintaining 5 stitch garter band that will be the “ribbing” of the hat. Repeat chart 8 times. Band will be approximately 20 inches long.

Complete the band with a three-needle bind off. Align live stitches on needle with the cast-on edge, right sides together. Hold the needle with stitches in back and cast-on end facing you. Insert needle in first stitch below the cast-on and the first stitch on the needle behind. Wrap yarn around needle and complete stitch through stitch on the needle on the fabric in front. Slip stitch off back needle. Repeat knitting through the next stitch under the cast-on and the stitch on the needle. You now have two stitches on your needle to bind off by lifting the right stitch over the left. One stitch remains. Continue until you have knit together both ends and bound off all stitches.

#### Crown:

With garter edge “ribbing” down and beginning at seam, pick up and knit 100 stitches along top edge. Pick up about 4 stitches to every 5 rows. If you end with a couple too many or too few you can adjust number in the first row.

### Materials

**Yarn:** Sweet Georgia Superwash Worsted (200yds/115g)

**Color:** DKA Exclusive Color River

**Needles:** US7 needles; 16” circular and double point or 32” for magic loop.

**Notions:** Cable Needle (or not...)

Tapestry needle

5 Stitch markers

**Size** Adult medium

### Gauge

20 stitches x 28 rows = 4” in stockinette stitch

### Abbreviations/Definitions

**K**=Knit

**P** = Purl

**K1tbl** = Knit 1 stitch through the back loop

**P1tbl** = Purl 1 stitch through the back loop

**PM** = Place marker

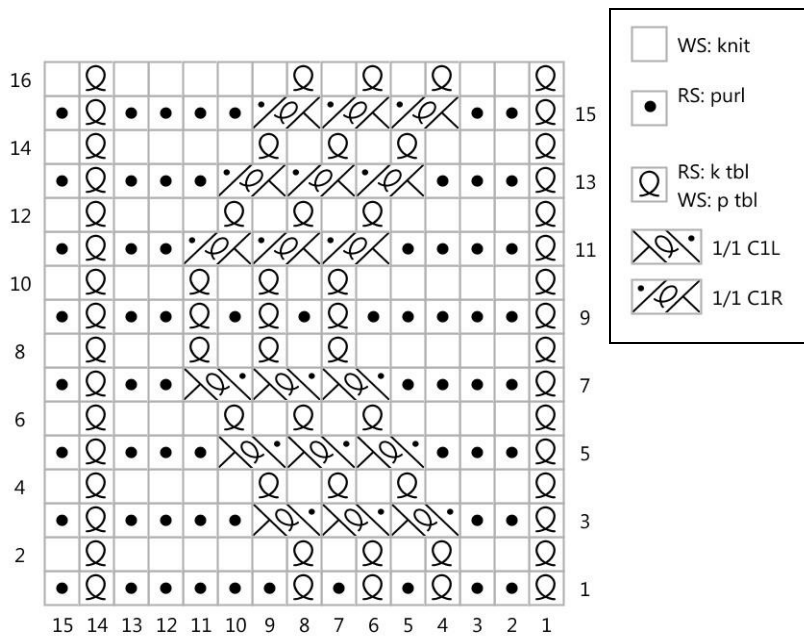
**SM** = Slip marker

**CN** = Cable needle

**K2tog** = Knit two stitches together to make one stitch.

**SSK** = Slip one stitch knitwise from left to right needle, slip next stitch knitwise from left to right needle. Insert left needle in front of the two slipped stitches and knit them together through the back loop.





### Crown Continues:

Place Marker at beginning of round and knit Moss Stitch as follows-

**Round 1:** P1, K1, repeat to end.

**Round 2:** P1, K1, repeat to end.

**Round 3:** K1, P1, repeat to end.

**Round 4:** K1, P1 repeat to end.

Repeat these four rounds six times until hat measures approximately 6" from edge. For a slouchier fit, add another repeat. On last repeat of Round 4, add stitch markers every 20 stitches to set up for decreasing.

### Crown decrease:

**Round 1:** \*K2tog, (P1, K1) x7, P1, SSK, K1, SM, repeat from \* 5 times.

**Round 2:** \*(K1, P1) x8, K2, SM, repeat from \* 5 times.

**Round 3:** \*K2tog, (P1, K1) x6, P1, SSK, K1, SM, repeat from \* 5 times.

**Round 4:** \*(K1, P1) x7, K2, SM, repeat from \* 5 times

**Round 5:** \*K2tog, (P1, K1) x5, P1, SSK, K1, SM, repeat from \* 5 times.

**Round 6:** \*(K1, P1) x6, K2, SM, repeat from \* 5 times.

**Round 7:** \*K2tog, (P1, K1) x4, P1, SSK, K1, SM, repeat from \* 5 times.

**Round 8:** \*(K1, P1) x5, K2, SM, repeat from \* 5 times.

**Round 9:** \*K2tog, (P1, K1) x3, P1, SSK, K1, SM, repeat from \* 5 times.

**Round 10:** \*(K1, P1) x4, K2, SM, repeat from \* 5 times.

**Round 11:** \*K2tog, (P1, K1) x2, P1, SSK, K1, SM, repeat from \* 5 times.

**Round 12:** \*(K1, P1) x3, K2, SM, repeat from \* 5 times.

**Round 13:** \*K2tog, P1, K1, P1, SSK, K1, SM, repeat from \* 5 times.

**Round 14:** \*(K1, P1) x2, K2, SM, repeat from \* 5 times.

**Round 15:** \*K2tog, P1, SSK, K1, SM, repeat from \* 5 times.

**Round 16:** K2tog across round, 10 stitches remain.

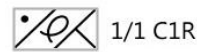
Break yarn leaving 6", thread on tapestry needle and run through remaining stitches twice. Cinch tight. Put on your head.

Find a river, a boat, and a nice fall day...



## Pattern tips & notes

Try cables with or without a cable needle!



Using CN, Cable 1 over 1 right...slip 1 to CN, hold in back, K1tbl, P1 from CN

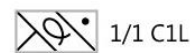
OR

-Slip the next two stitches to the right needle.

- Put the left needle into the 2<sup>nd</sup> stitch from the tip of the right needle through the back loop.

- While holding the base of those 2 stitches with your fingertips, slip both off of the right needle. The 2<sup>nd</sup> stitch will be safe on the left needle, but the 1<sup>st</sup> stitch (the knit stitch) will not.

- Calmly, put the left needle into that knit stitch then slip the stitch on the right needle back to the left. You now have both stitches on the left needle in the correct order to knit the first stitch through the back loop and then purl the next.



Using CN, Cable 1 over 1 left...slip 1 to CN, hold in front, P1, K1tbl from CN.

OR

Insert the needle into the 2<sup>nd</sup> stitch on the left needle through the back loop.

- While holding the base of the first two stitches, slip the stitches off of the left needle. The 2<sup>nd</sup> stitch will be safe on the right needle, but the 1<sup>st</sup> stitch will not. Your fingers should keep it safe if you are pinching the base of the stitches.

- Calmly, put the left needle into that knit stitch and slip the stitch on the right needle back to the left. You now have both stitches in the correct order to purl the 1<sup>st</sup> stitch and knit the 2<sup>nd</sup> stitch through the back loop.