



A River Runs Through Cowl

By Carly Stipe

This cowl was designed for our September 2018 Knit the River cruise!

Instructions

This cowl is knit flat and then seamed.

Cast on 30 stitches

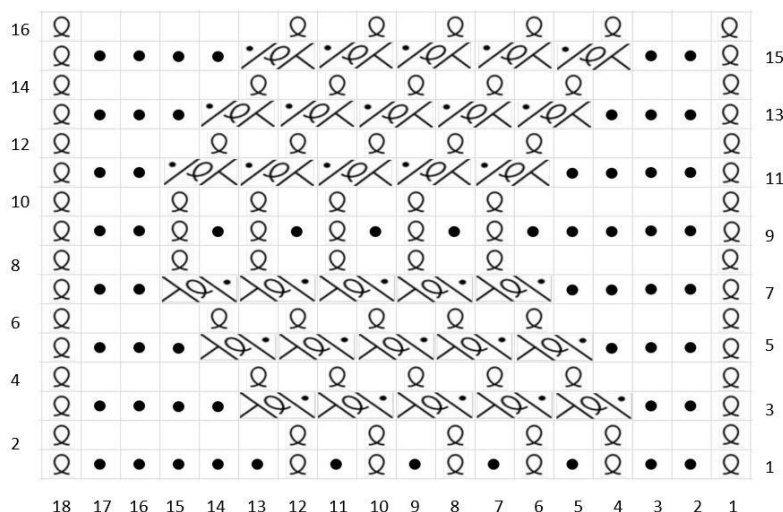
Row 1 (RS): K6, pm, work river chart, pm, k3, Sl3wyif.

Row 2 (WS): K6, sm, work river chart, sm, k3, Sl3wyif.

Repeat **Rows 1 & 2**, working appropriate row of chart and slipping markers as you come to them. Our cowl repeats the 16 row chart 10 times total.

Bind off and seam together.

River Chart



Key

- WS: knit
- RS: purl
- RS: k tbl
WS: p tbl
- 1/1 C1L
- 1/1 C1R



Materials

Yarn: 1 skein, Quince & Co *Osprey* (170yds/100g)

Color: Belize 139

Needles: US11

Notions: Cable Needle

Tapestry needle, 2 stitch markers

Size 7" x 31"

Gauge

14 stitches x 20 rows = 4" in garter blocked

Abbreviations/Definitions

K=Knit

P = Purl

Tbl = Through back loop

RS = Right side

WS = Wrong side

Sl3wyif = slip 3 stitches as if to purl with yarn in front

PM = Place Marker

SM =Slip Marker

1/1C1L = Using CN, Cable 1 over 1 left...slip 1 to CN, hold in front, P1, K1tbl from CN.

1/1C1R = Using CN, Cable 1 over 1 right...slip 1 to CN, hold in back, K1tbl, P1 from CN

